



Public School 174
William Sidney
Mount

Town Hall

Update on School Re-opening

Thursday, August 6, 2020

10am- 11am

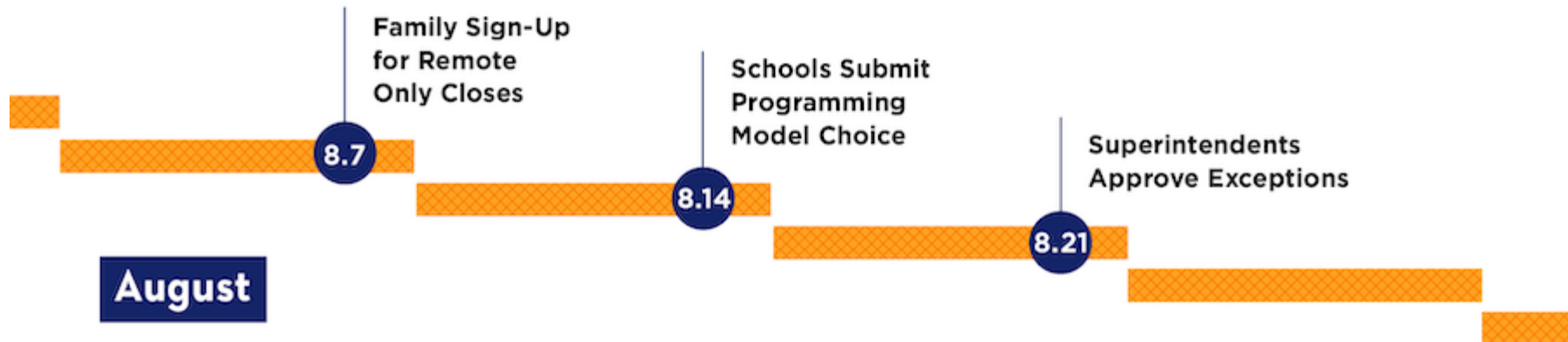
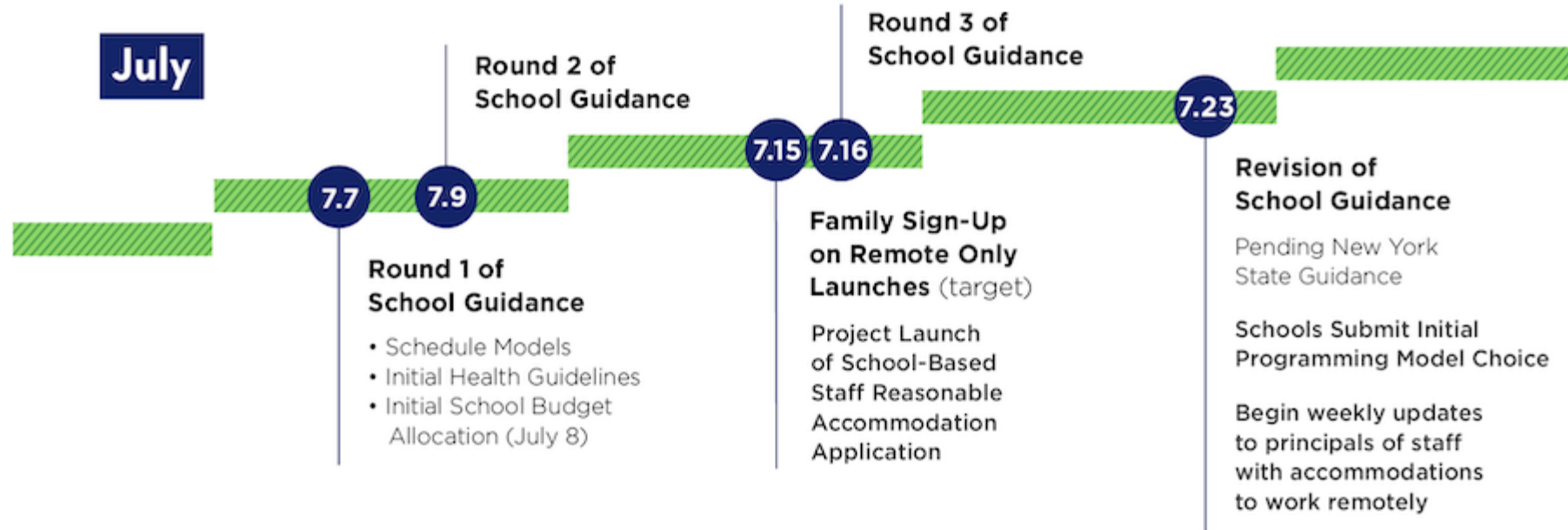
Via MEET

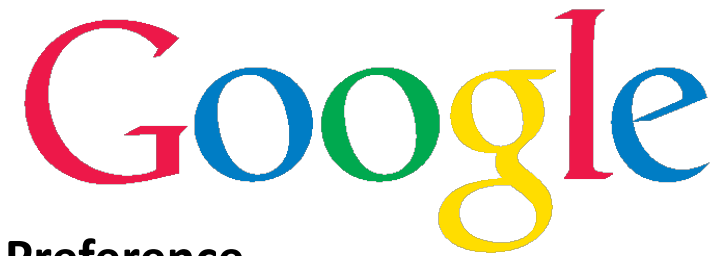
Karin Kelly, Principal

Laura Hui, Parent Coordinator



New York City Timeline





2020-2021 Learning Preference -

100% Remote Learning:

“Opt in” to have your child learn 100% remotely (all online from home) **by August 7th**.

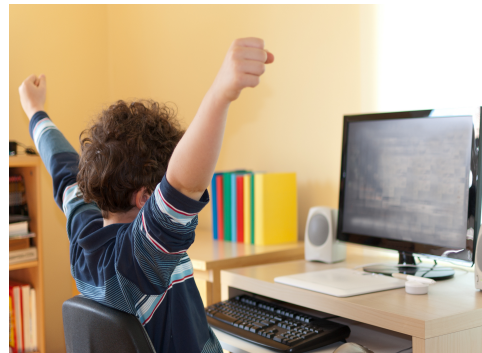
<https://www.nycenet.edu/surveys/learningpreference>

To choose this option for your child, fill out and [submit this form](#).

If you change your mind, please complete this form again before August 7th.

There will be scheduled cycles to opt back into blended learning.

If you have difficulties completing this form online, call 311.





Department of Education

Chancellor Richard A. Carranza

**Opt into
100% Remote
Learning online
by August 7th.**

Note:
Opt back into Blended
Learning at scheduled
intervals.TBD (ex November)

Comparison of Remote and Blended Learning Experiences: School Year 2020-21	
Fully Remote Learning Experience <i>Fully remote instruction at home</i>	Blended Learning Experience <i>Combination of learning in-person at school buildings, and remote instruction at home</i>
<p><i>Students participate in a regular schedule of age-appropriate, standards-based remote learning from home every day.</i></p> <ul style="list-style-type: none"> • Students will have live interaction with teachers every day. • Every class will include live instruction. The amount will vary by grade, depending on what is developmentally appropriate. • Students will use a DOE-approved online platform (such as iLearnNYC or Google Classroom), available in multiple languages, for lessons and submission of work. • Students will experience whole class, small group and/or individualized instruction in an online environment, as well as collaboration with classmates and teachers. • We will make every effort to ensure students consistently have the same instructors throughout the year. • There will be an emphasis on social-emotional learning across school communities to ensure the mental health and wellness of students and staff. • Students will be able to access video-recorded lessons, assignments, and tasks. • Teachers will regularly engage students and families to check student work, provide timely feedback, and adjust instruction as necessary, via remote learning platforms, calls, emails, video chats, etc. • Students and families will have access to one-on-one support to help with instructional activities. 	<p><i>Students go to school buildings for age-appropriate, standards-based, in-person instruction on some days; and continue their learning from home remotely on the other days of the week.</i></p> <ul style="list-style-type: none"> • On in-person days, students will attend classes in their school building. • On in-person days, students will have the opportunity for whole class, small group, and individual work and collaboration with classmates and teachers. • Students will use a DOE-approved online platform (such as iLearnNYC or Google Classroom), available in multiple languages, for lessons and submission of work. • We will make every effort to ensure students will be taught by a consistent set of teachers in-person and remotely, who work together throughout the year to maintain continuity and maximize learning. • There will be an emphasis on social-emotional learning across school communities to ensure the mental health and wellness of students and staff. • Students will be able to access video-recorded lessons, assignments, and tasks. • Teachers will regularly engage students and families to check student work, provide timely feedback, and adjust instruction as necessary, in-person and via remote learning platforms, calls, emails, video chats, etc. • Students and families will have access to one-on-one support to help with instructional activities.

**Blended Learning
Opt into—
100% Remote at Home
anytime.**

Chancellor Carranza's Family Letter – August 3, 2020 ***Health and Safety Protocol***

Criteria to Open Schools and Keep them Open

While we continue to carefully monitor a constantly changing health landscape, one thing remains steadfast: our commitment to the health and safety of our students, teachers, and staff. This priority is the foundation of all of our policy moving into September.

On July 31, the Mayor and I announced that for school buildings to open in September and remain open, on a weekly average the city must see fewer than 3% of all COVID-19 tests come back positive. Additionally, if 3% or more of New Yorkers who are tested for COVID-19 are found to have the virus after we open, school buildings will close again, and 100% of learning will be remote for every student.

Since June, we've hovered around 1-2%, and are working closely with the New York City Department of Health and Mental Hygiene (NYC Health), NYC Test + Trace, and the Mayor's Office to prepare for a coordinated school reopening. If staff and students aren't healthy, they can't teach and learn, and we are doing all we can to ensure that schools remain safe and healthy for learning.



What Happens if Someone Gets Sick: New Information on COVID-19 Testing and Tracing in Schools

In close collaboration with our expert colleagues at NYC Health, we have developed strict protocols that address prevention, precaution, and response to one or more of our students or employees having a confirmed case of COVID-19. It's important to know that a "confirmed case" means that a parent or guardian, student, or staff member submits a positive test result from a healthcare provider or laboratory—like a City-run testing site, a private doctor, or an urgent care center—to the school.

Our protocols to keep school communities healthy include:

- **Prevention:** Starting with the first day of the 2020-21 school year, if a student or staff member is feeling sick, they are required to stay home. Additionally, if their symptoms are consistent with COVID-19, they will be asked to get tested.
- **Feeling Sick in School:** If a student begins experiencing symptoms in school, they will be isolated and monitored by a school staff member until they are picked up by their parent or guardian. Staff members who become symptomatic at school must notify administration and immediately leave the building.
- **Testing:** All school staff members are asked to get [tested](#) for COVID-19 in the days leading up to the beginning of school, and will be prioritized for expedited results at the 34 City-run testing sites. All school staff are also asked to get tested monthly during the school year. This free testing is also available for families citywide.
- **Tracing:** In the event of a confirmed COVID-19 case in a school, NYC Test + Trace and NYC Health will investigate to determine close contacts within the school. All students and teachers in the classroom with the confirmed case are assumed close contacts and will be instructed to self-quarantine for 14 days since their last exposure to that case. In older grades where students may travel between classes, this applies to all classes that the confirmed case was in.

If there's more than one case in a school, and it's not in the same classroom, learning will continue remotely and the school building will close for at least 24 hours while NYC Test + Trace and NYC Health investigate. Depending on the outcome of the investigation, affected classrooms or the whole building will remain closed for 14 days for quarantine.

Students will continue their learning remotely during any necessary quarantine periods.

- **Communication:** Whether symptoms begin at home or in school, there will be a clear flow of information to facilitate fast action and prevent spread. If a COVID-19 case is confirmed, schools will communicate to all families and students at school.

Overall Health and Safety Protocols for Every School

Testing and tracing are part of several strict health protocols designed to keep our school communities healthy. Here are the key things that you and your family should know about NYC Department of Education (DOE) health and safety practices, policies, and protocols as we re-open our school buildings in September:

- At all times, students and staff must wear face coverings protecting their nose and mouth while at school or on their way to school. Exceptions will be made for children who can't wear a face covering for medical reasons, and for younger children who aren't developmentally able to wear a face covering.
- Students and staff must maintain six feet of physical distancing throughout the school day, anywhere on school grounds and to and from school.
- Schools will be cleaned throughout the day and disinfected each night, with special attention to high-touch areas.
- Face coverings, hand sanitizer, and cleaning supplies will be readily available in throughout every school.
- Every school will have a school-based team ready to respond in the event that there is a health concern in a school.
- Every school will have a designated isolation room for use in the event that a student becomes ill during the school day.

For more details on these and other policies, please visit schools.nyc.gov/returntoschool2020 and click “Health and Safety” for additional information and all the latest updates.

We are approaching reopening by centering health and safety and basing our policies on the expertise of health professionals—period.

CONTEXT

To accommodate health and safety measures, as well as staffing and capacity constraints, we are planning for a cohort-based approach whereby students rotate between in-person and remote learning.

KEY TENETS OF PLAN

Families & Students

Families will be able to opt out of in-person instruction and choose remote learning full-time; there will be defined time periods for parents to opt back in.

Split Models

- Based on their local constraints, schools will determine a split model from a set of choices.
 - School should aim to provide in-person instruction to at least 33% of students. Central will work with schools unable to reach this baseline.
- Schools will be able to request modifications within certain parameters.

Space

- With social distancing, median range of 9-12 students per classroom (actual number varies by size).
- Plans to repurpose space within schools and re-allocate space if needed to meet baseline.

Model 1

EVERY OTHER DAY WITH ROTATING MONDAYS TWO IN-PERSON COHORTS



Option for: Elementary, Middle and High Schools

Summary:

- Two in-person cohorts, one remote.
- Groups A and B will rotate attendance on Mondays.
- Option to program for each group to be in-person every other day (Model 1A), or in-person two days and remote for three days (Model 1B).
- Model 1A is "Chancellor Recommended"
- **Group A, Group B:** in-person learning on two consistent days per week; remote learning for non-in person days.
- **Group D:** remote every day; consists of students who opt out of in-person instruction.

Model 1A

Week	Mon.	Tues.	Wed.	Thurs.	Fri.
	Group D (Remote)				
1	Group A	Group A	Group B	Group A	Group B
2	Group B	Group A	Group B	Group A	Group B

Model 1B

Week	Mon.	Tues.	Wed.	Thurs.	Fri.
	Group D (Remote)				
1	Group A	Group A	Group A	Group B	Group B
2	Group B	Group A	Group A	Group B	Group B

Model 2

1-2 DAYS PER WEEK WITH ALTERNATING WEEKS THREE IN-PERSON COHORTS



Option for: Elementary, Middle and High Schools

Summary:

- Three in-person cohorts, one remote.
- Provides regularity on days per week with some variation by week (e.g. Group A is in-person every Wednesday, as well as on Monday in week 1 and Tuesday in week 3).
- Because this model provides the greatest degree of regularity among the three-cohort models, it is the only option available for elementary schools and is "Chancellor Recommended" for middle schools that must program for 1/3 of their students.
- **Group A, Group B, Group C:** in-person learning 1-3 days per week (5 days every 3 weeks); remote learning for non-in person days.
- **Group D:** remote every day; consists of students who opt out of in-person instruction.

Model 2

Week	Mon.	Tues.	Wed.	Thurs.	Fri.
	Group D (Remote)				
1	Group A	Group B	Group A	Group B	Group C
2	Group B	Group C	Group A	Group B	Group C
3	Group C	Group A	Group A	Group B	Group C

 In-Person Instruction

Model 3

6 DAY ROTATION WITH 1-2 DAYS PER WEEK THREE IN-PERSON COHORTS



Option for: Middle and High Schools

Summary:

- Three in-person cohorts, one remote.
- Option to program for each group to be in-person one day and remote two days (Model 3A), or in-person two days and remote for four days (Model 3B).
- **Group A, Group B, Group C:** in-person learning 1-2 days per week (twice in a 6-day rotation); remote learning for non-in person days.
- **Group D:** remote every day; consists of students who opt out of in-person instruction.

Model 3A

Mon.	Tues.	Wed.	Thurs.	Fri.	Mon.
Group D (Remote)					Group D
Group A	Group B	Group C	Group A	Group B	Group C

6-Day Rotation

Model 3B

Mon.	Tues.	Wed.	Thurs.	Fri.	Mon.
Group D (Remote)					Group D
Group A	Group A	Group B	Group B	Group C	Group C

6-Day Rotation

 In-Person Instruction

Model 4

EVERY OTHER WEEK TWO IN-PERSON COHORTS



Option for: District 75 Schools

Summary:

- Two in-person cohorts, one remote.
- Each group receives a week of in-person instruction every other week.
- **Group A, Group B:** in-person learning every week; remote learning for non-in person days.
- **Group D:** remote every day; consists of students who opt out of in-person instruction.
- Alternate model (4B) that includes a group of students (**Group C**) that would be full-time in-person.

Model 4A

Week	Mon.	Tues.	Wed.	Thurs.	Fri.
	Group D (Remote)				
1	Group A	Group A	Group A	Group A	Group A
2	Group B	Group B	Group B	Group B	Group B

Model 4B

Week	Mon.	Tues.	Wed.	Thurs.	Fri.
	Group D (Remote)				
	Group C				
1	Group A	Group A	Group A	Group A	Group A
2	Group B	Group B	Group B	Group B	Group B

Model 5

2-3 DAYS PER WEEK (ROTATING MONDAY) TWO IN-PERSON COHORTS



Option for: District 75 Schools

Summary:

- Two in-person cohorts, one remote.
- Groups A or Group B receives a third day of in-person instruction every other week.
- **Group A, Group B:** in-person learning on two consistent days per week plus alternative Mondays; remote learning for non-in person days.
- **Group D:** remote every day; consists of students who opt out of in-person instruction.
- Alternate model (5B) that includes a group of students (**Group C**) that would be full-time in-person.

Model 5A

Week	Mon.	Tues.	Wed.	Thurs.	Fri.
	Group D (Remote)				
1	Group A	Group A	Group A	Group B	Group B
2	Group B	Group A	Group A	Group B	Group B

Model 5B

Week	Mon.	Tues.	Wed.	Thurs.	Fri.
	Group D (Remote)				
	Group C				
1	Group A	Group A	Group A	Group B	Group B
2	Group B	Group A	Group A	Group B	Group B

Public School 174



William Sidney Mount
 65-10 Dieterle Crescent
 Rego Park, New York 11374
 Karin Kelly, Principal

Public School 174 Exception Model – Fall 2020



Blended Model AB (combination of MS Option and D75 Option) – accounting for 30% of 650 students

Summary – 6 Day Rotation – Same every 3 weeks for Model A; every other week for Model B

<i>General Education; Integrated Co Teaching Program; Gifted and Talented **</i>						
	Week	Monday	Tuesday	Wednesday	Thursday	Friday
Model A **	1	A	A	B	B	C
	2	C	A	A	B	B
	3	C	C	A	A	B
Group D – All Remote every day						
<i>Special Class – 12:1:1 and 12:1 Programs</i>						
Group E – All Remote every day * Parent Choice						
Group F – Full Time in Person every day * Based on Student Need						
Model B	1	G	G	G	G	G
	2	H	H	H	H	H

Model A **This takes into account continuity of instruction for young learners – back-to-back days with a teacher. Matches the “*Gradual Release Model*” of teach (Day 1) reteach (Day 2), then enrich or reteach (small differentiated groups during Remote on Days 3 and 4.)

Model B Assures parent choice as well as meeting the needs of our students with Special Needs; Full time in person assures that students have full access to their instructional needs, as well as the multiple Related Services on students IEP



District 28 Early Planning Re-Opening Survey in July PS 174

(374 survey responses)

Thank you to all who completed the Survey!

Are you planning to opt your child into full time remote learning in place of the blended model?

24%	Yes	90
43%	No	161
32%	Undecided	123

Now tell us what concerns you the most about re-entry.

Rank the following.

Based upon your ranking above, tell us a little more about your number one concern.

Planning

[State Education Department Issues Guidance to Reopen New York State Schools | New York State Education Department](#)

The New York State Education Department released guidance to help schools and school districts as they plan to reopen, whether that occurs in person, remotely, or in a combination of the two. The guidance builds on the Framework of Guidance that the Department presented to the Board of Regents on Monday, July 13. “On Monday, the Department presented a comprehensive framework of ...

www.nysed.gov

Centers for Disease Control and Prevention Issued Re-opening Guidance

CDC issued [guidance](#) on re-opening for school districts.

Walkthrough Building Space

Staff and Student

- ? **How many students opt for 100% Remote**
- ? **Staff who is working remote or in school**
- ? **# students per Class/ teacher assignments TBD**

Safe and Health

Social Distancing

Masks

Daily Cleaning

Meals

Transportation



Save the date! Register!

**NYC Citywide Virtual
Family and Student Return to School Sessions
With Chancellor Carranza
6:30pm- 8pm**

Return to School 2020

Want to learn more about NYC schools plans for the 2020–21 school year? Attend our virtual citywide Information session for students and families—

- ✓ July 14, 2020
- ✓ July 28, 2020

August 12, 2020

August 27, 2020

Register now: schools.nyc.gov/returntoschool2020. You can also select your preferred language (English, Spanish or Mandarin) and submit a question.

The Next Steps...

additional

“Updates on School Re-opening”

via email, Remind,

Town Hall and

Parent Information Sessions



Visit our websites---

ps174.org

schools.nyc.gov/ReturnToSchool